



**LAMY**

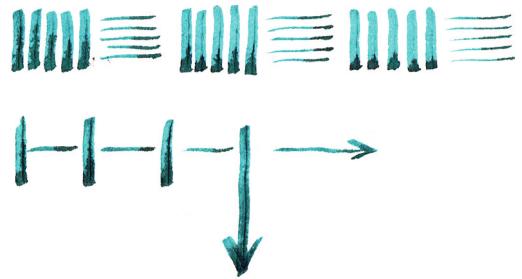
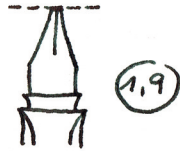
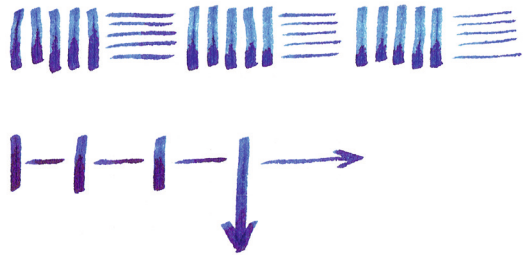
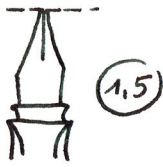
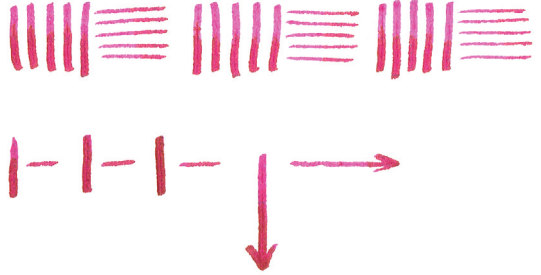
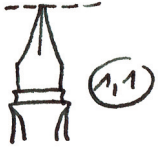
MODERNE

Kalligrafie

Workshop

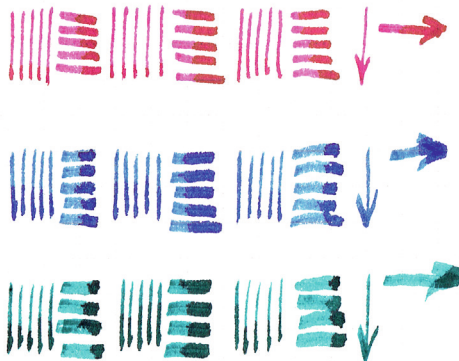
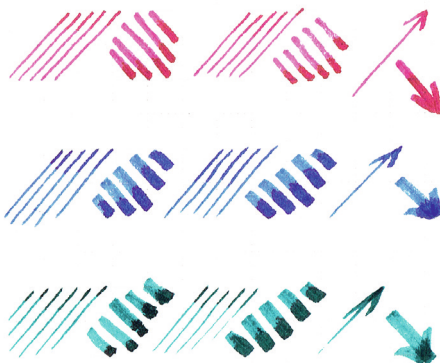
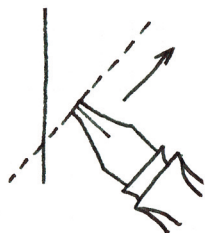
# Die Federführung

Federstärke



# Die Federführung

Schreibwinkel

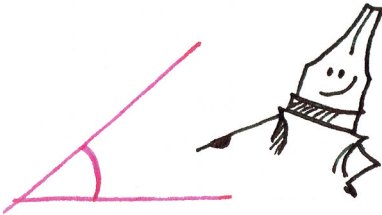


# Ein paar wichtige Tipps

Die richtige Technik



Federspitze  
VOLLSTÄNDIG  
aufsetzen



Schreibwinkel  
beibehalten!



nicht  
schieben



Ziehen

# Ein paar wichtige Tipps

Einheitliches Schriftbild

Schreibwinkel beibehalten:

abcdefghijklmnopqrstuvwxyz

abcdefghijklmnopqrstuvwxyz

Parallellinien und gleichmäßige Abstände beachten:

abcdefghijklmnopqrstuvwxyz

abcdefghijklmnopqrstuvwxyz

abcdefghijklmnopqrstuvwxyz

ABCDEFGHIJKLMNOPQRSTUVWXYZ

ABCDEFGHIJKLMNOPQRSTUVWXYZ

ABCDEFGHIJKLMNOPQRSTUVWXYZ

ABCDEFGHIJKLMNOPQRSTUVWXYZ

Lass Dich inspirieren!

abcdefghijkl  
klmnopqr  
stuvwxyz



ABCDEFGHIJ  
KLMNOPQR  
STUVWXYZ

ABCDEFGHIJKLMN OPQRSTUVWXYZ

Schreibschrift

ABCDE  
FGHIJK  
LMNOPQ  
RSTUV  
WXYZ

ABCDEFGHI  
JKLMNOP  
QRSTUVWXYZ

abcdefghijklmnopqr  
stuvwxyz

ABCDEFGHIJKLMN OPQRSTU  
VWXYZ → ABCDEF  
GHIJKL

mit Schwingung

ABCDEF



ABCDEFGHI  
JKLMNOPQ  
RSTUVWXY  
Z

A B  
C

abcdefghijkl  
lmnopqrstu  
vwxyz

abcdefg  
hijklm  
nopqrs  
tuvwxyz

think  
pink

ABCDEFGHI  
JKLMNOPQ  
RSTUVWXY  
Z

mit und ohne  
SERIFEN

MNOPQR  
STUVWXY  
Z

ABCDEF

